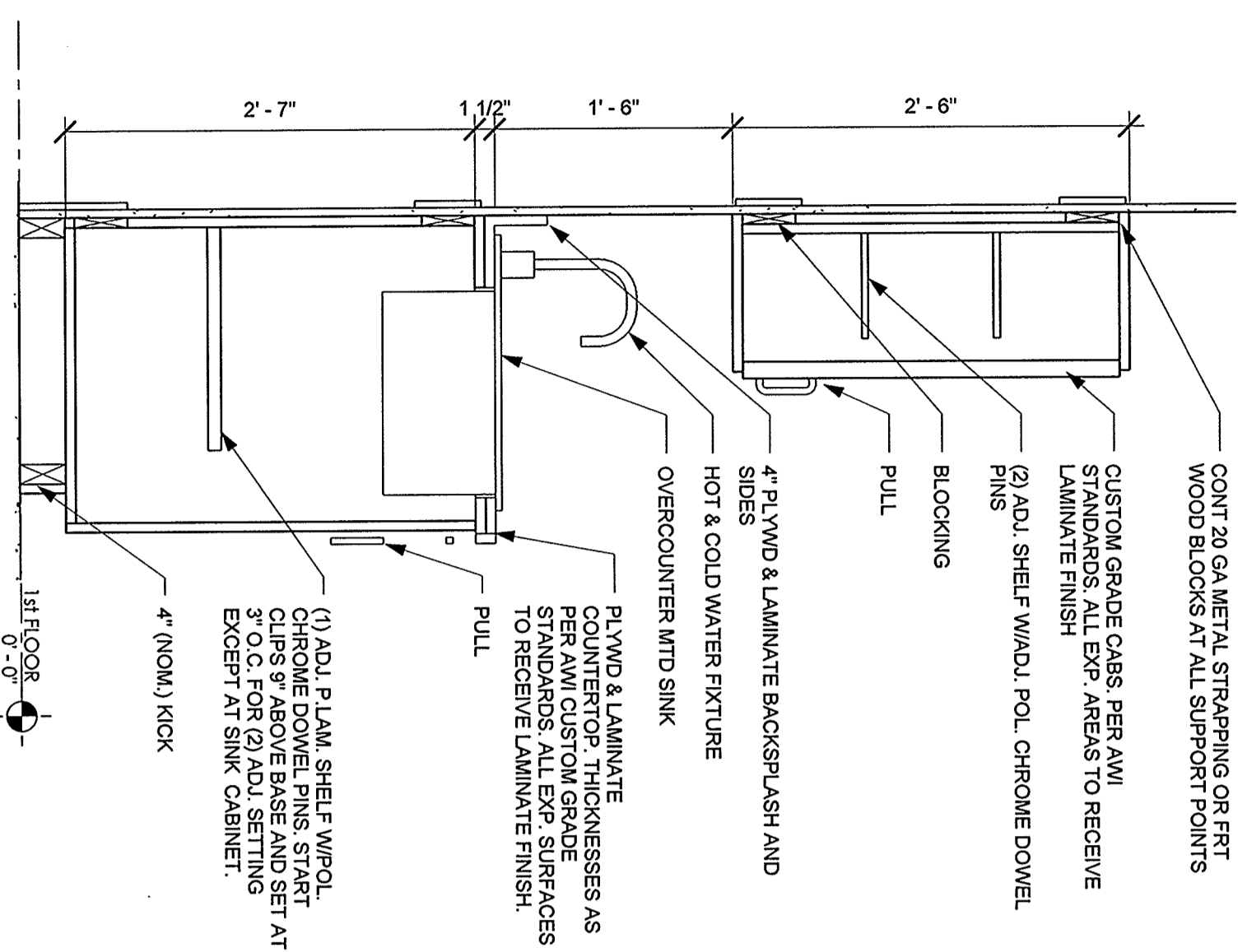
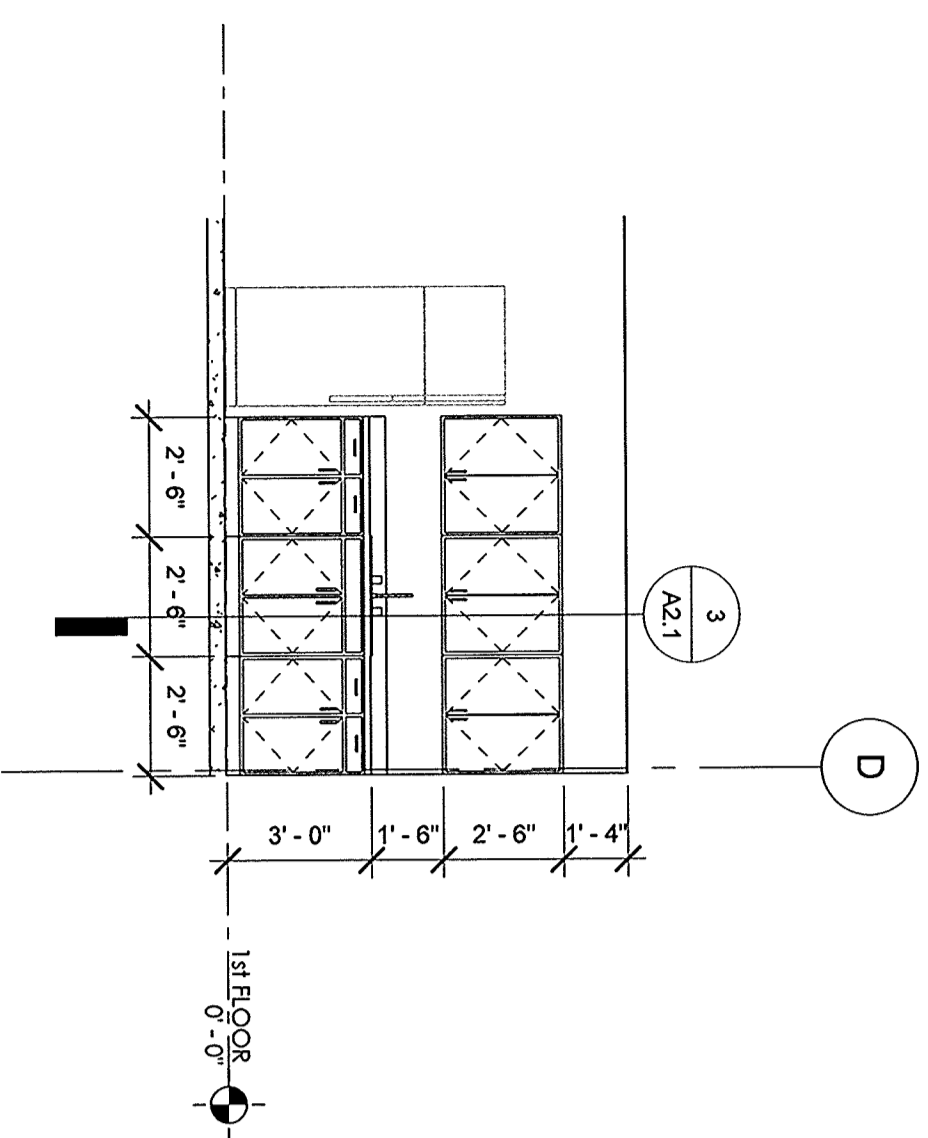


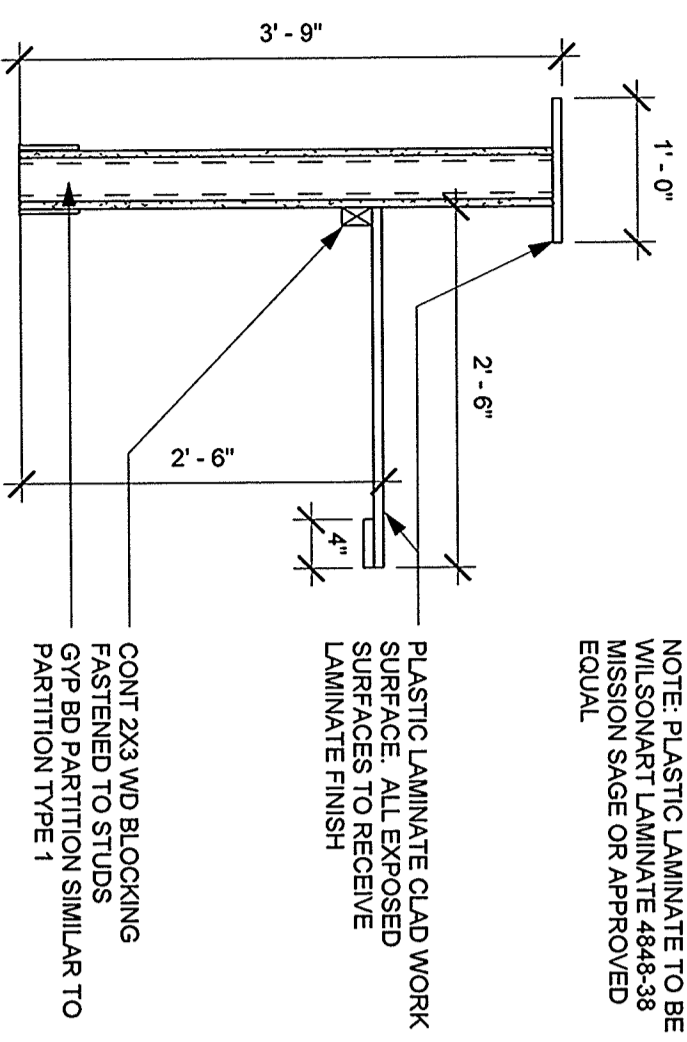
- NOTES:
1. ALL WOOD VENEER STAINS AND LAMINATE COLORS TO BE SELECTED BY STANDARD COLOR CHART
 2. CONTRACTOR TO FIELD VERIFY DIMENSIONS PRIOR TO FABRICATION.
 3. ALL EXPOSED SIDE PANELS ARE TO RECEIVE SAME FINISH AS FACE PANEL.
 4. ALL FILLER PANELS TO RECEIVE FINISH EQUAL TO CABINET FACE PANEL FINISH WITH CONTINUOUS COUNTERTOPS.
 5. ALL BASE CABINETS SHALL BE PROVIDED WITH CONTINUOUS SUPPORTS TO PREVENT DEFLECTION OF COUNTERTOPS.
 6. PROVIDE WOOD SUPPORTS TO PREVENT DEFLECTION OF COUNTERTOPS.
 7. PROVIDE FINISHES AND PANELS AT ALL EXPOSED EDGES FINISH TO MATCH FACE PANELS.
 8. PROVIDE BACK SPLASH AND SIDE SPLASH AT EVERY COUNTERTOP SURFACE.



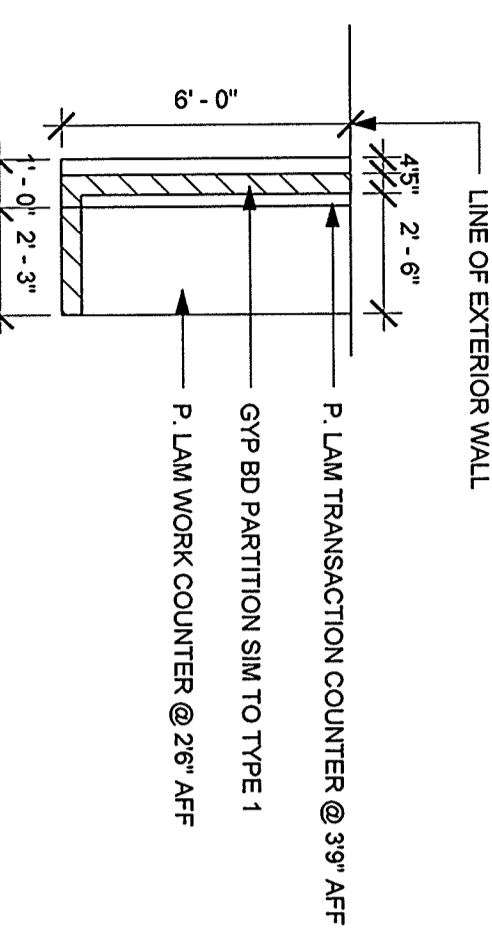
MILLWORK DETAIL AND NOTES
1" = 1'-0"



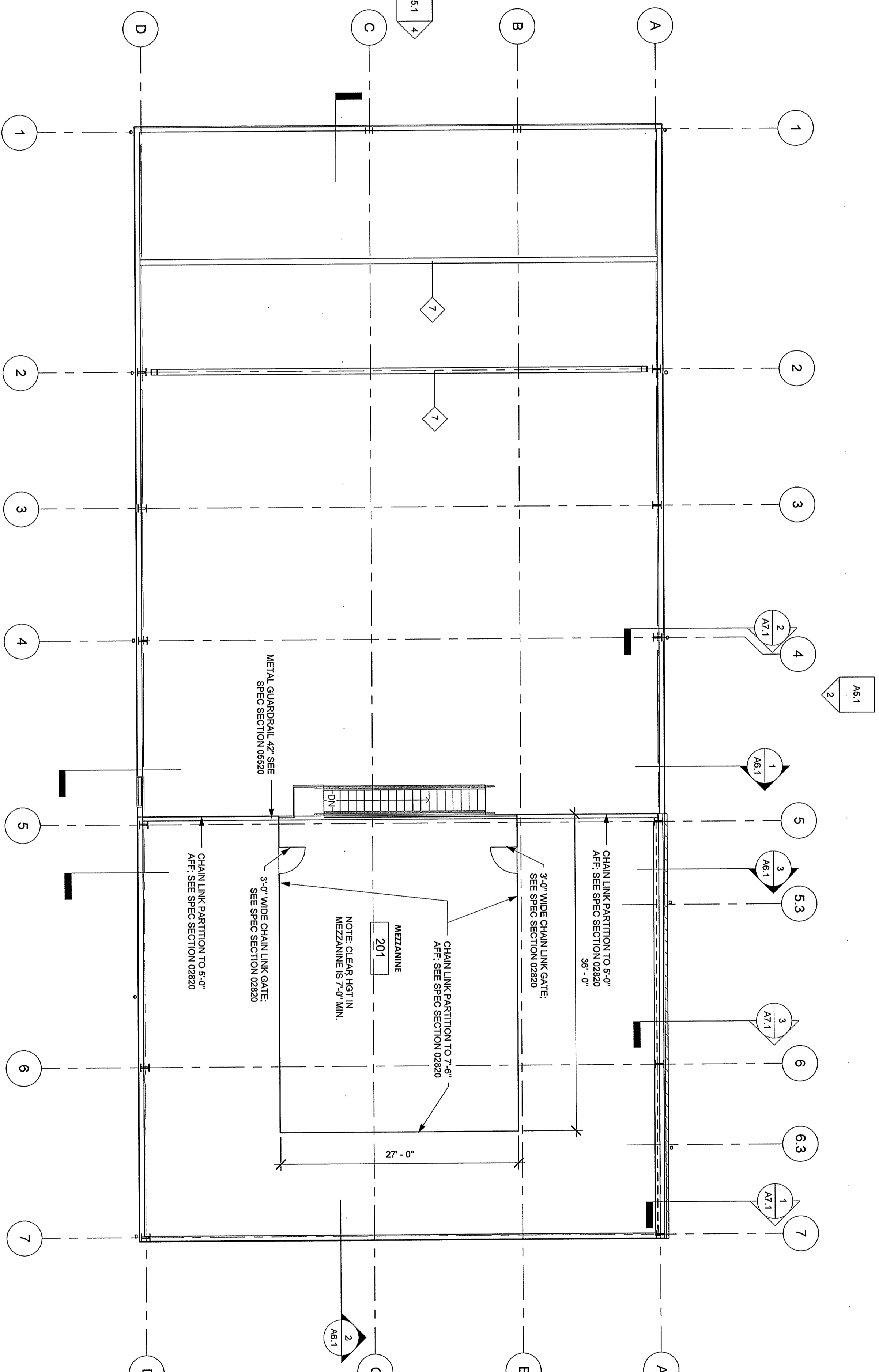
ELEV
1/4" = 1'-0"



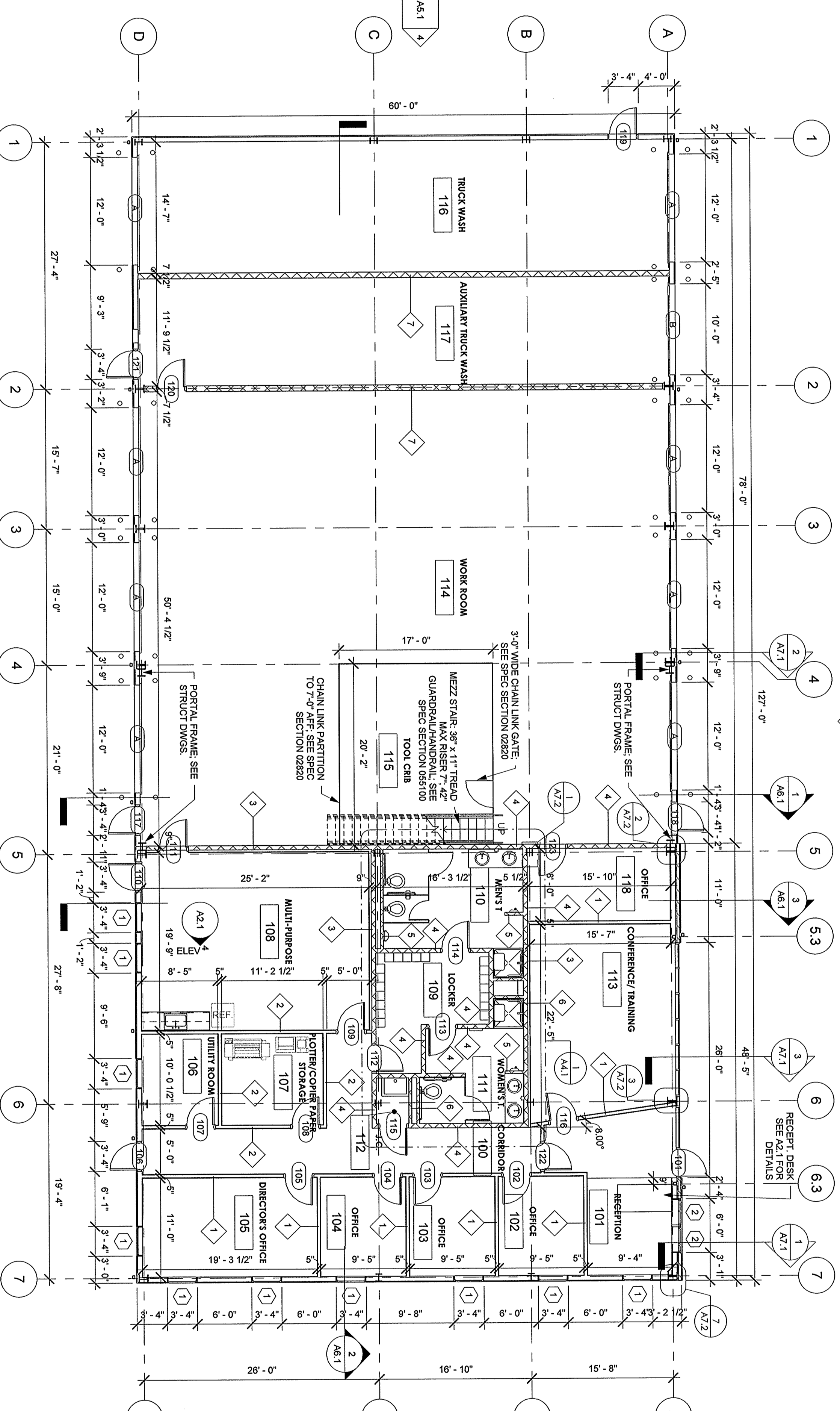
RECEPTION DESK DETAIL
3/4" = 1'-0"



RECEPTION DESK PLAN
1/4" = 1'-0"

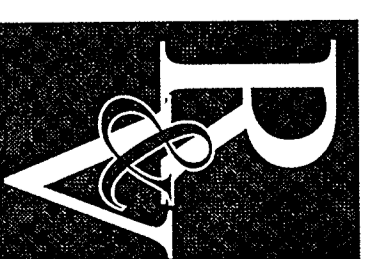


MEZZANINE PLAN
1/8" = 1'-0"



FIRST FLOOR PLAN
1/8" = 1'-0"

- NOTES
1. FOR PARTITION TYPES SEE A2.2
 2. FOR DOOR TYPES AND SCHEDULES SEE A3.1
 3. FOR FINISH SCHEDULES SEE A3.1
 4. FOR REFLECTED CEILING PLAN SEE A3.1
 5. FOR FINISH SCHEDULES SEE A3.1
 6. FOR REFLECTED CEILING PLAN SEE A3.1
 7. ALL PARTITION TYPES SHALL BE FINISHED TO MATCH FACE PANELS. SEE TYPICAL DETAILS ON A2.2.



REMINGTON &
VERNICK ENGINEERS
232 KNICKS HIGHWAY EAST
MADISON, N.J. 08053
PHONE: 609.426.1000
FAX: 609.426.1001
WWW.REMINGTON-VERNICK.COM
Professional Engineer License No. 34-28200-000

DATE: 09.09.09
DESIGNER: KENNETH C. HESSLER
PROJECT: NEW WILLINGBORO DEPARTMENT OF PUBLIC WORKS

DATE: 09.09.09
DESIGNER: KENNETH C. HESSLER
PROJECT: NEW WILLINGBORO DEPARTMENT OF PUBLIC WORKS



HDWR
Celebrating 15 Years of Excellence
PLANNING
ENGINEERING
INTERIORS
CONSULTING
www.hdwr.com

MEMBER OF THE AMERICAN INSTITUTE OF ARCHITECTS
LLOYD A. ROSENBERG N.J. - C-5823
GREGORY STORA N.J. - A19813
PAMELA A. WACHNE N.J. - A11030
DAN ADAMSON N.J. - A11019

NCARB
NATIONAL COUNCIL OF ARCHITECTS
NATIONAL BOARD OF PROFESSIONAL PLANNERS (NBPP)
NATIONAL BOARD OF PROFESSIONAL ENGINEERS (NBPE)
NATIONAL BOARD OF PROFESSIONAL GEODETISTS (NBPG)
NATIONAL BOARD OF PROFESSIONAL LANDSCAPE ARCHITECTS (NBLA)
NATIONAL BOARD OF PROFESSIONAL PHOTOGRAPHERS (NBPPH)
NATIONAL BOARD OF PROFESSIONAL SCULPTORS (NBPS)
NATIONAL BOARD OF PROFESSIONAL THEATRICAL DESIGNERS (NBTD)
NATIONAL BOARD OF PROFESSIONAL WRITERS (NBW)

NO.	REVISION	DATE	BY	CHK

FIRST FLOOR AND MEZZANINE PLANS
NEW WILLINGBORO DEPARTMENT OF PUBLIC WORKS
TOWNSHIP COUNTY NEW JERSEY

DATE: 09.09.09
DESIGNER: KENNETH C. HESSLER
PROJECT: NEW WILLINGBORO DEPARTMENT OF PUBLIC WORKS

DATE: 09.09.09
DESIGNER: KENNETH C. HESSLER
PROJECT: NEW WILLINGBORO DEPARTMENT OF PUBLIC WORKS

DATE: 09.09.09
DESIGNER: KENNETH C. HESSLER
PROJECT: NEW WILLINGBORO DEPARTMENT OF PUBLIC WORKS