

Residential Receptacle Requirements (General)

Sample Handout

- 1) This document applies to all dwelling unit kitchens, family rooms, dining rooms, living rooms, parlors, libraries, dens, sunrooms, bedrooms, recreation rooms, or similar rooms.
- 2) Receptacles shall be installed so that no point measured horizontally along the floor line in any wall space is over 6 feet from the receptacle. This allows for a maximum of 12 feet between receptacles on the same wall. Commonly called the 6 ft. /12 ft. rule. (See Figures 1&2)
- 3) Wall space includes the following:
 - a) Any space 2 foot or more (including space measured around corners) and unbroken along the floor line by doorways, fireplaces, and similar openings (See Figure 1).
 - b) The space occupied by fixed door panels (See Figure 1) (Note: See #4 for floor receptacles).
 - c) The space afforded by fixed room dividers such as bar counters or railings (See Figure 2).

Fig. 1

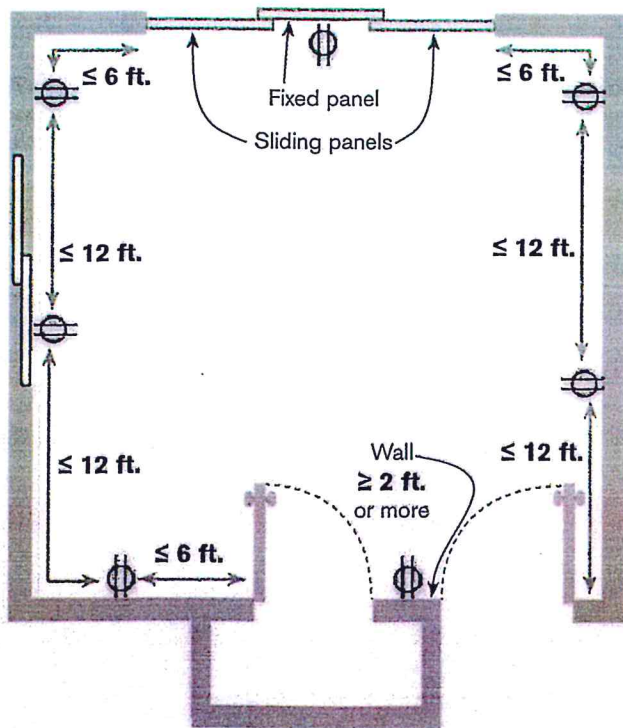


Fig. 3

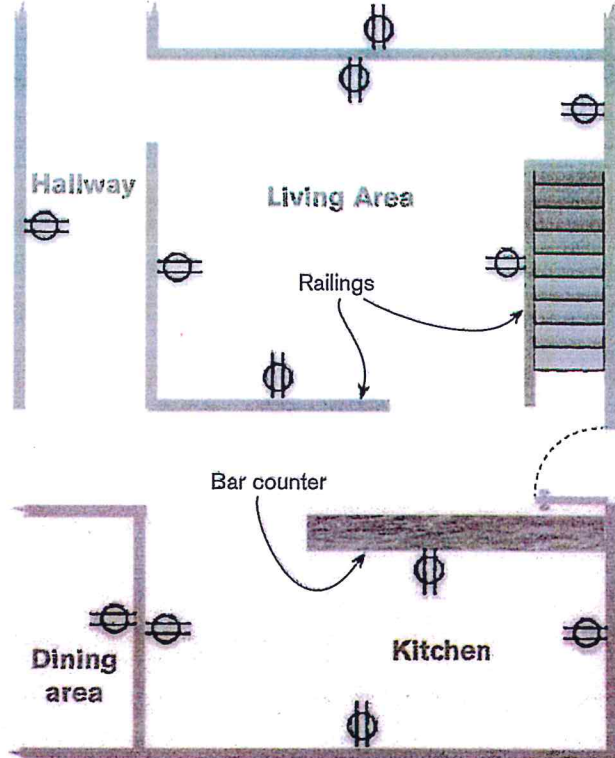


Fig. 2

6 ft. & 12 ft. Rule Explained

Wall receptacles serve spaces for 6 ft. on each side of receptacle. Therefore, max. spacing between wall receptacles is 12 ft.

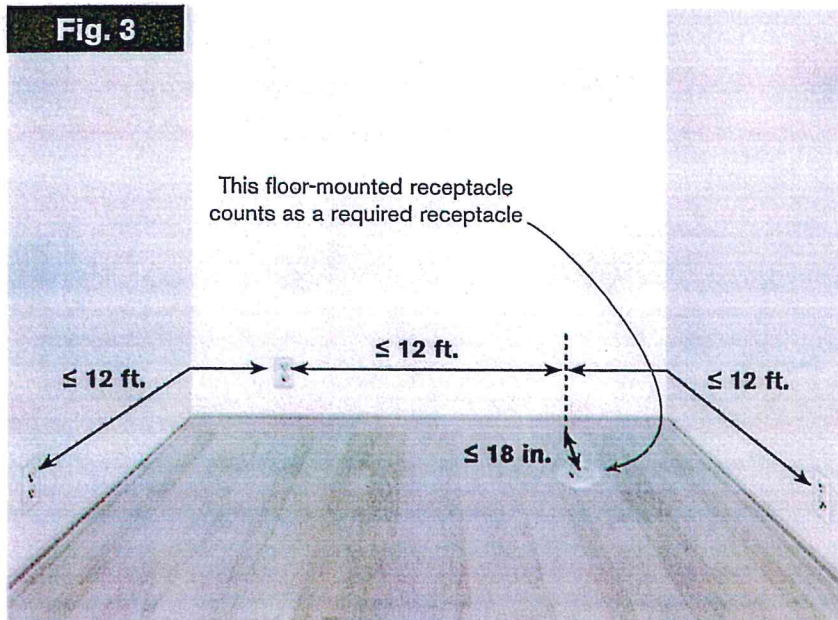


Residential Receptacle Requirements (General)

Sample Handout

- 4) Receptacles installed in the floor must be within 18 inches of the wall to be included as a required receptacle (See Figure 3).
- 5) At least one receptacle shall be installed for the laundry. (See Figure 4).
- 6) Any receptacle installed for a specific appliance must be located within 6 feet of the appliance (See Figure 4).
- 7) At least one receptacle must be installed at the front and back of the dwelling unit, and be listed as weather resistant type receptacle.
- 8) At least one general-purpose receptacle must be install within each basement, attached garage, detached garage with electrical power, and hallways 10 feet or more in length.

Fig. 3



All 120V 15- and 20- ampere receptacles installed in areas specified by Art. 210.52 shall be listed as tamper-resistant type.

All 120V 15- and 20- ampere receptacles shall have Arc-Fault Circuit Protection per NEC Art. 210.12(B).

All 120V 15- and 20- ampere receptacles in dwelling unit garages, accessory buildings and basements shall be GFCI protected per NEC Art. 210.8(A)(2).

This receptacle not acceptable if it is the only receptacle provided for the appliance.

